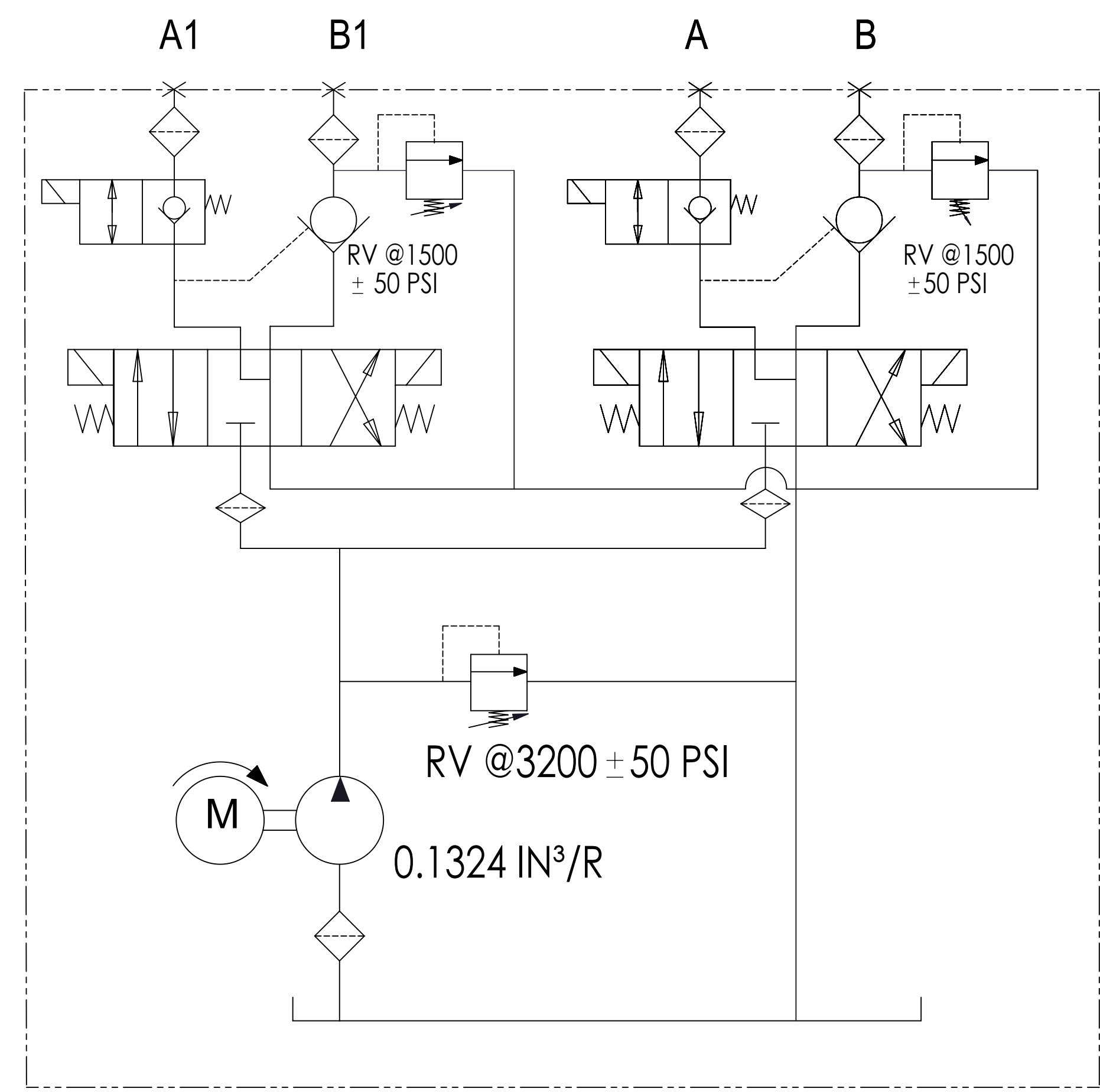
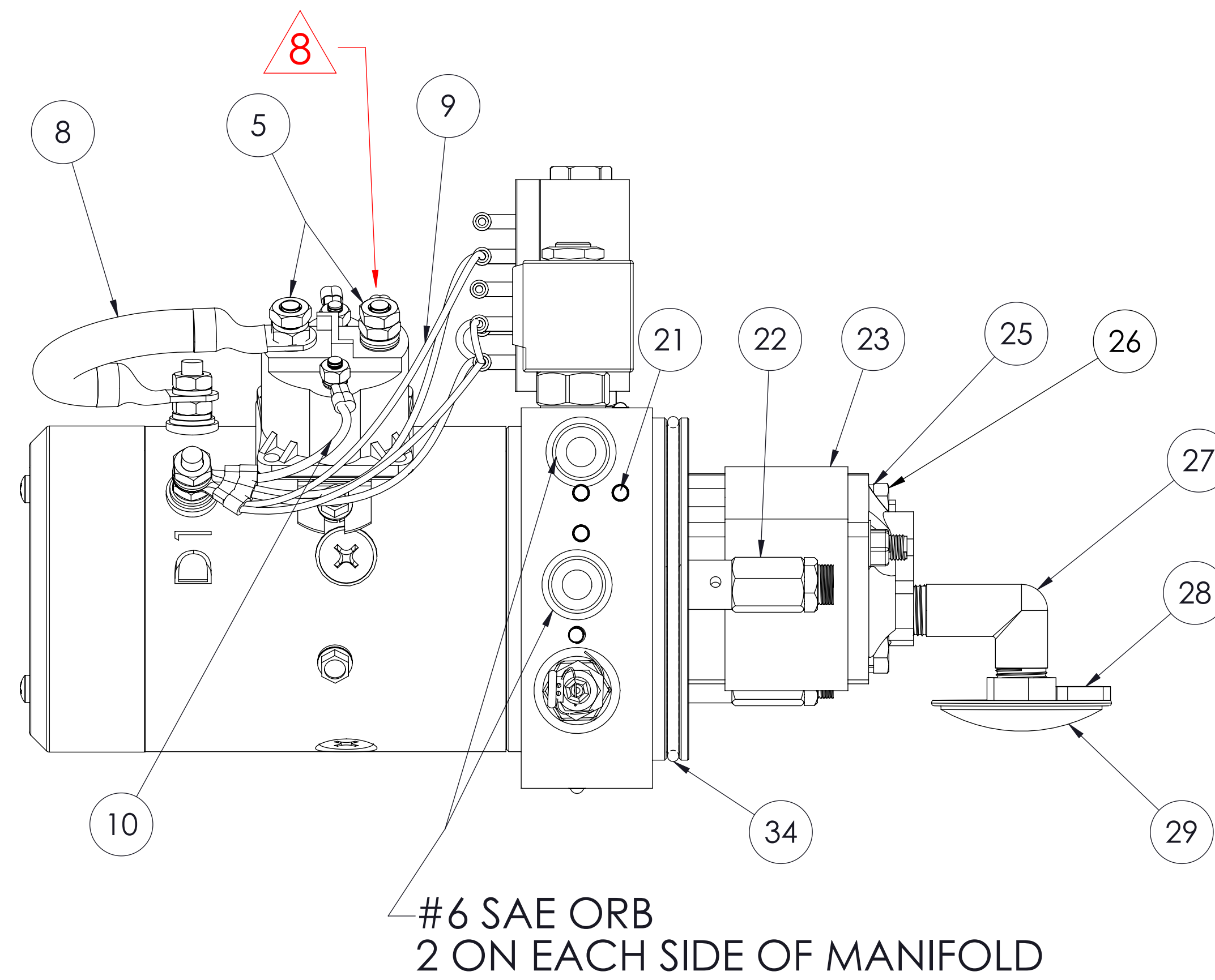
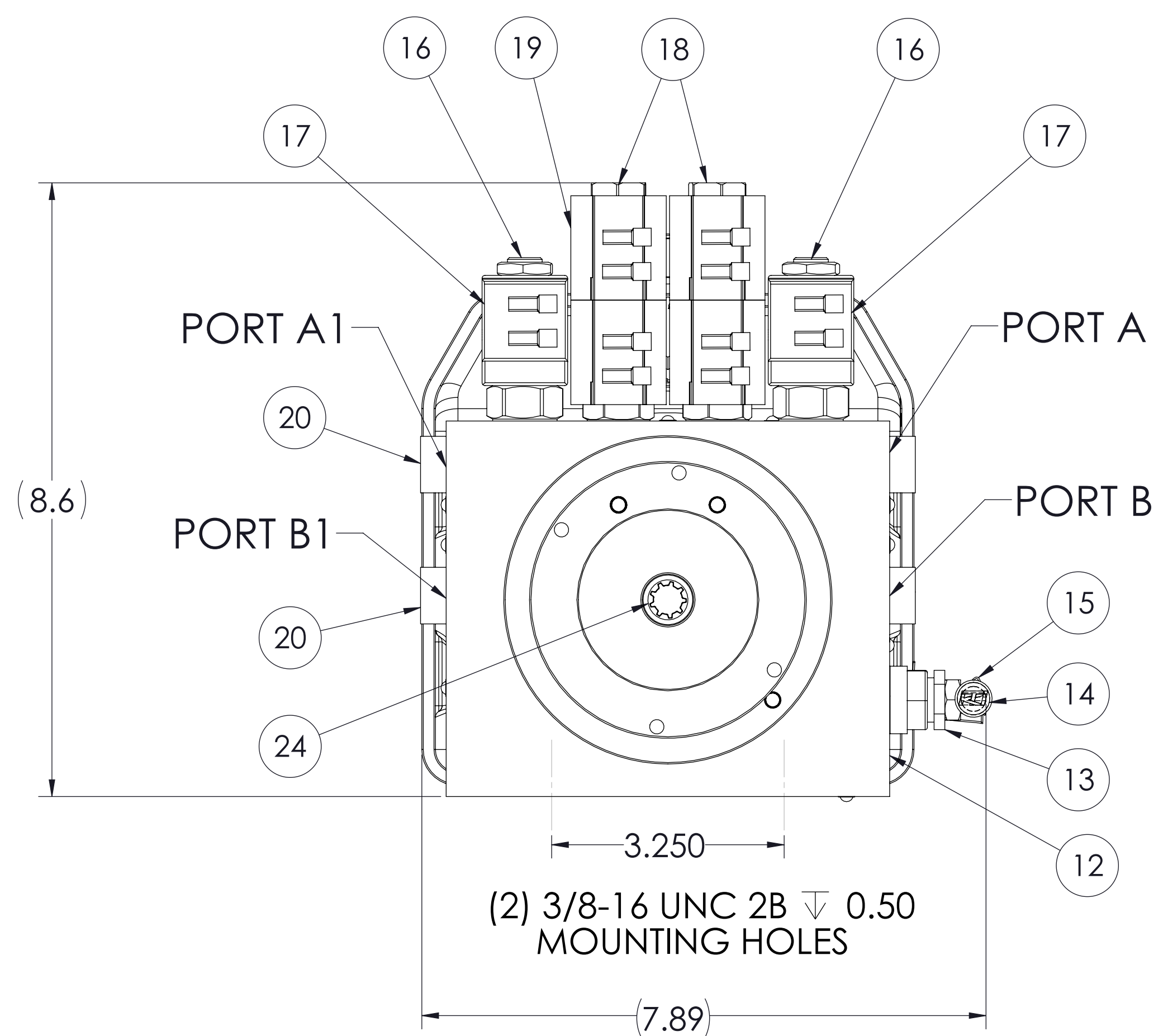
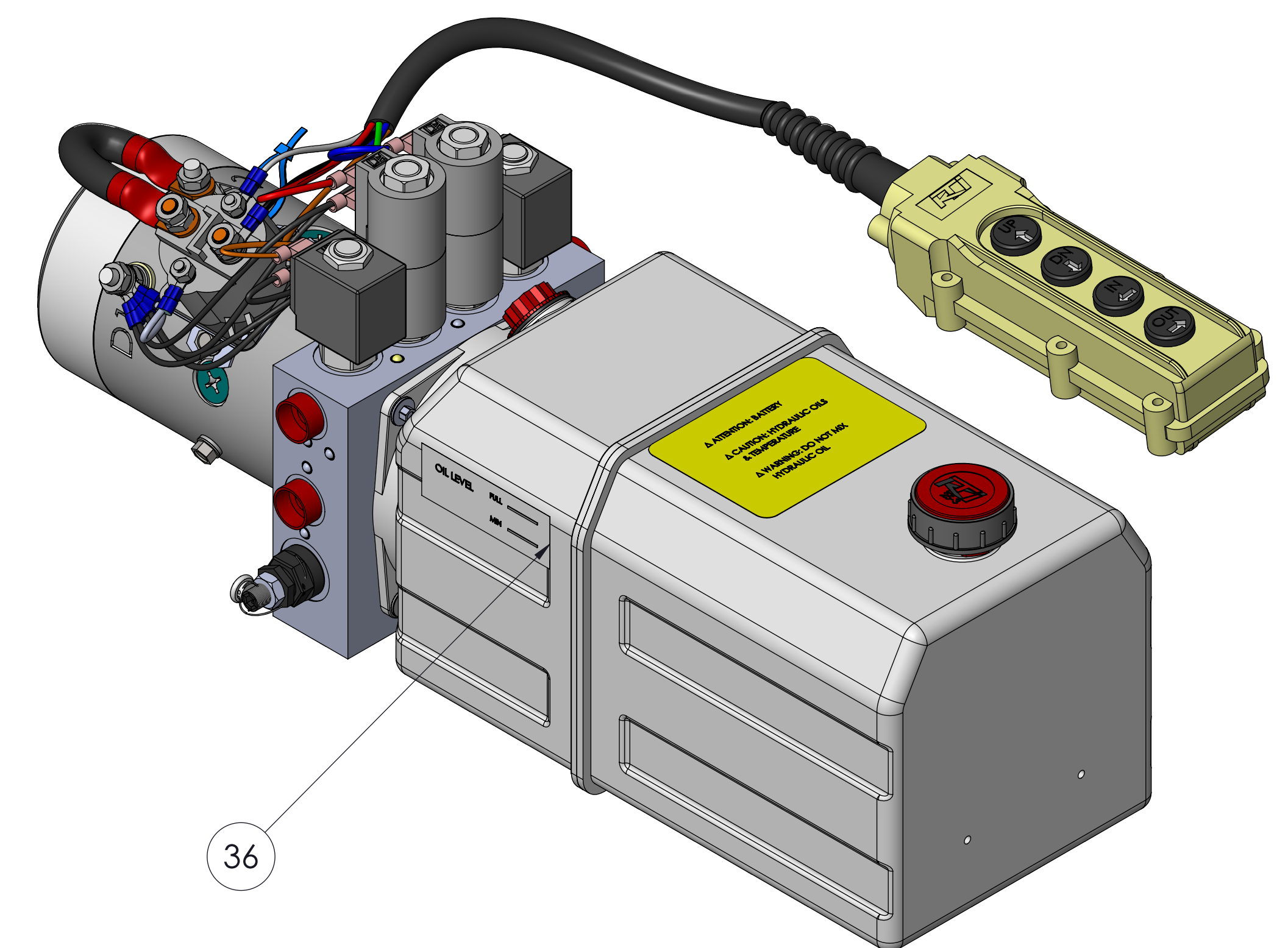
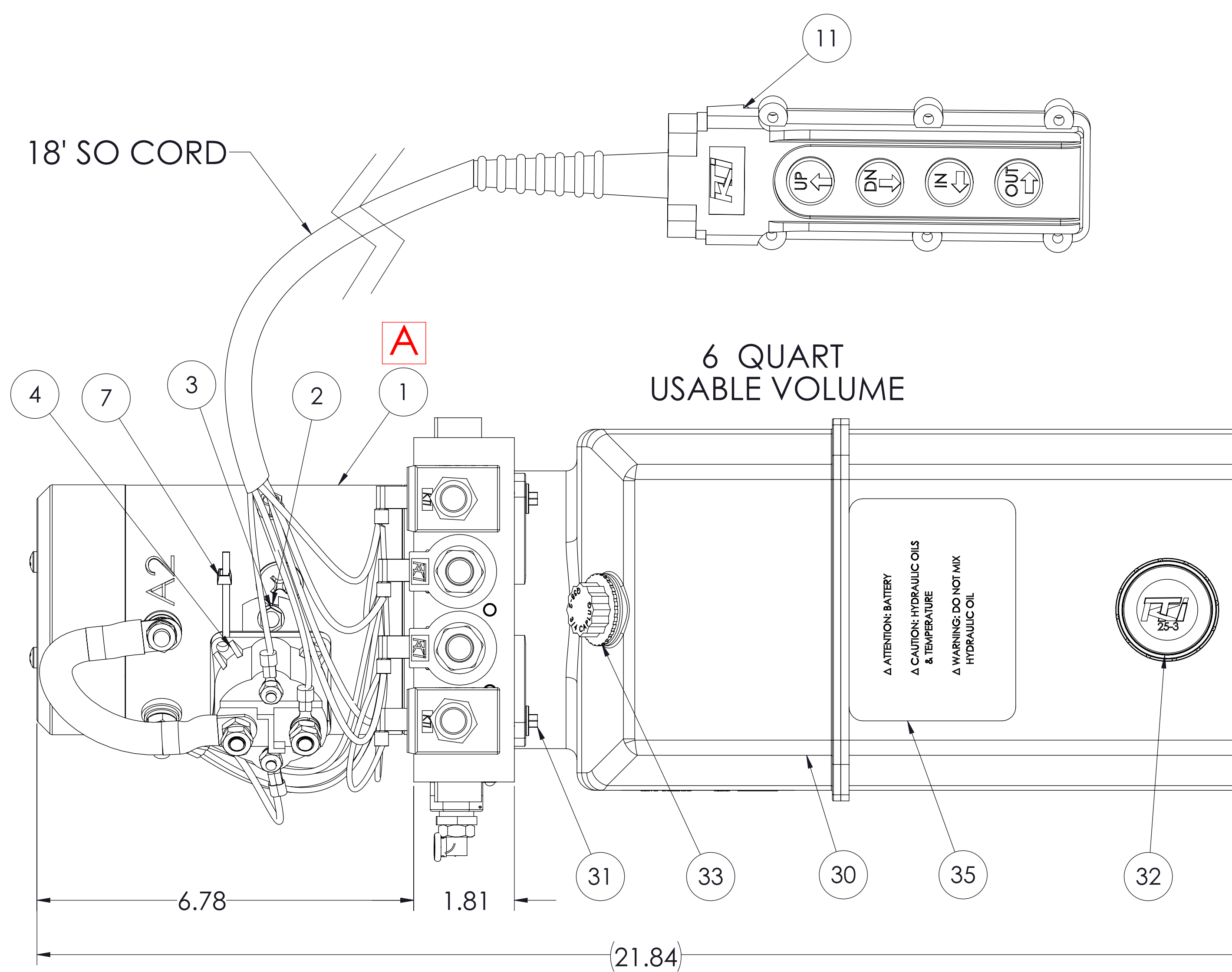


REVISIONS				
REV.	ECR	DESCRIPTION	APPR	DATE
A		CHANGE MOTOR FROM SINGLE TERMINAL (1245-15) TO TWO TERMINAL(1245-18) UPDATE DRAWING TO MATCH CURRENT PRODUCTION		11/04/13



HYDRAULIC CIRCUIT 211

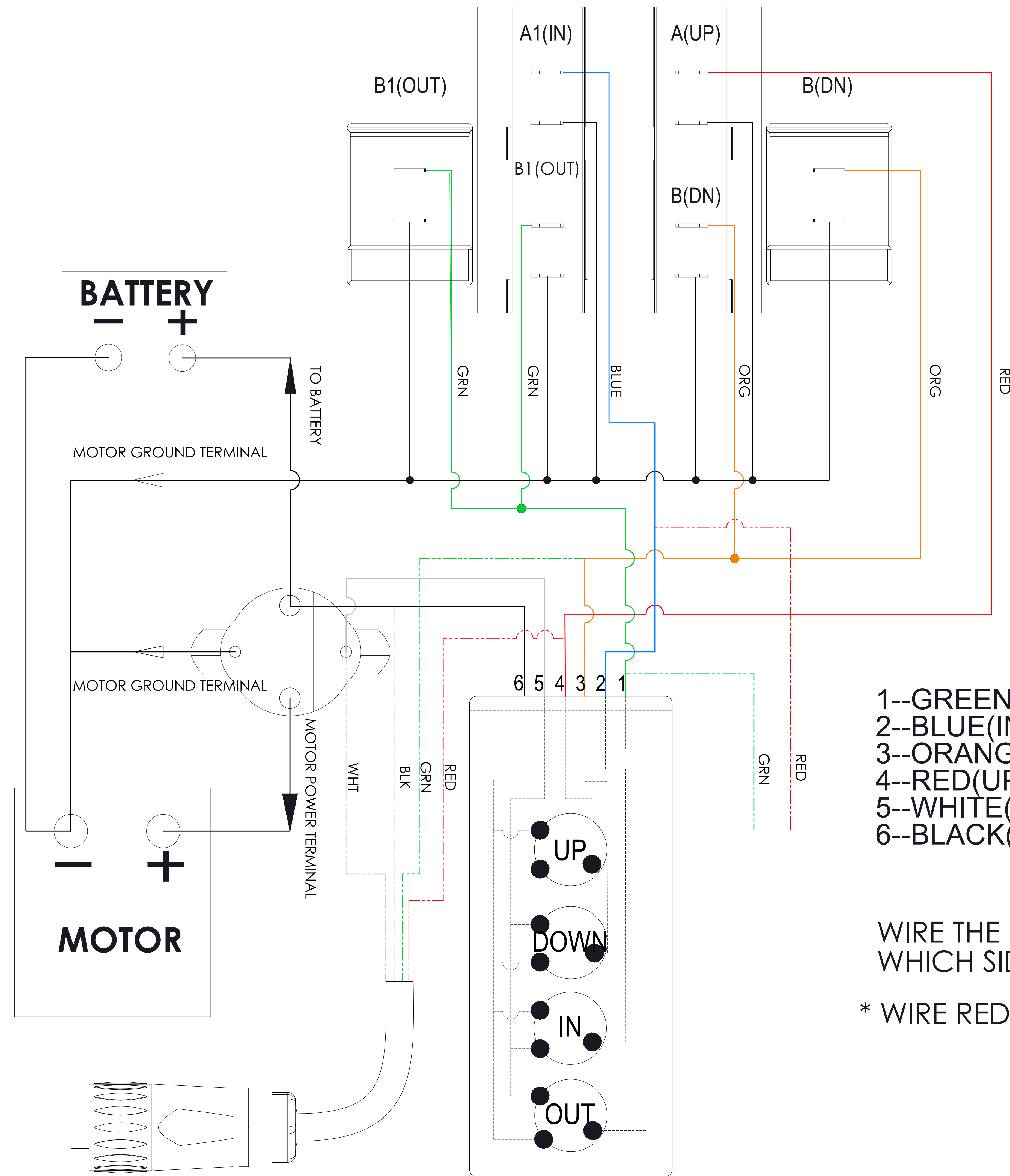


ITEM NO.	PART NUMBER	DESCRIPTION	QTY
A 1	1245-18	12V DC, (2) TERMINAL, ELECTRIC MOTOR	1
2	Q14-025	1/4" STEEL SPLIT LOCK WASHER	2
3	Q19-025-0038-23	1/4-20 X 3/8" STEEL HEX FLANGE HEAD SELF TAPPING SCREW	2
4	391-2	12V DC HEAVY DUTY PLASTIC START SOLENOID SWITCH /100 amp	1
5	Q21-031	5/16-24 UNF HEX NUT	2
6	31-5	WARNING LABEL TAG, YELLOW, TORQUE SPEC (NOT SHOWN)	1
7	Q37-2	NYLON BLACK CABLE TIE 8"	2
8	27-1	TERMINAL WIRE (SOLENOID POWER TERMINAL TO MOTOR POWER TERMINAL)	2
9	27-35	GROUND WIRE (MOTOR GROUND TERMINAL TO 3 COIL) DUAL DOUBLE ACTING	1
10	27-16	GROUND WIRE (MOTOR GROUND TERMINAL TO SOLENOID GROUND TERMINAL)	1
11	394-6	4 BUTTONS REMOTE PENDANT ASSY (POWER UP, POWER DOWN, POWER IN, POWER OUT).18' FEET LONG REMOTE	1
12	3920-4444	DUAL DOUBLE ACTING MANIFOLD	1
13	LRV-080	CARTRIDGE RELIEF VALVE, ADJUSTABLE SET @ 3200 PSI	1
14	63-1	KTI WARRANTY LEAD SEAL	1
15	63-2	WIRE FOR RELIEF VALVE	1
16	LSPC-080-4-00	NC 2 WAY AND P.O.C IN 4 WAY CARTRIDGE VALVE	2
17	LC-08-S-5B	10V DC #8 SQUARE COIL W/ DUAL SPADE	2
18	LSV-08-34-M	4W3P MOTOR CENTER, SPOOL-TYPE CARTRIDGE SOLENOID VALVE	2
19	LC2-08-C-5B	10V DC #8 CYLINDRICAL COIL W/ DUAL SPADE	4
20	Q5-6	SAE #6 (9/16-18) PLASTIC SHIPPING PLUG	4
21	SX-6	EXPANDER SEALING PLUG, 6mm ZINC PLATED	13
22	RVSAE6-30	SECONDARY RELIEF VALVE W/SIDE EXHAUST PORTS, SET @ 1500 PSI	2
23	PL-2.10	PRESSURE LOADED GEAR PUMP (0.1324 IN³/R)	1
24	52-22	FEMALE SPLINE 9 TOOTH - TO FEMALE SLOT COUPLING	1
25	Q14-031	5/16" STEEL SPLIT LOCK WASHER	2
26	Q16-031-0300	5/16-24 x 3.00" HEX HEAD CAP SCREW, GRADE 5	2
27	21-1	3/8" NPT 90 DEGREE ALUMINUM DIE-CAST INLET ELBOW	1
28	23-1	RECTANGLE CARBON MAGNET	1
29	57-6	3/8" NPT INLET STRAINER, 120 MESH, PLEATED	1
30	8181-6	6 QUART PLASTIC OFFSET RESERVOIR	1
31	Q95-025-0050	1/4-20 x 0.50", 6mm HEX FLANGE LOCKING CAP SCREW	4
32	25-3	KTI 3/4 NPT 40 MICRON AIR BREATHER	1
33	Q38-2	KTI 3/4 NPT PLASTIC PLUG W/ NEOPRENE GASKET	1
34	Q2-4113	O-RING, I.D. 113mm, C/S 4mm. METRIC BUNA, RESERVOIR	1
35	31-9	WARNING LABEL, BATTERY & OIL TEMP	1
36	31-2	OIL LEVEL LABEL	1

- GENERAL NOTE:
- 1) TORQUE PUMP MOUNTING CAP SCREWS TO 15-16 LB/FT.
 - 2) TORQUE MOTOR MOUNTING CAP SCREWS TO 8 LB/FT.
 - 3) TORQUE LSPC-080-4-00, LSV-08-34-M, LRV-080, RVSAE6-30 TO 18 LB/FT.
 - 4) TIGHTEN LC2-08-C-5B, LC-08-S-5B FINGER TIGHT.
 - 5) SET LRV-080 @ 3200 PSI, SET RVSAE6-30 @ 1500 PSI.
 - 6) 319-2 & 394-6 WIRE COMPLETED.
 - 7) TEST COMPLETE PER TS/DC 4586.
 - 8) INSTALL ITEM #6 (WARING LABEL TAG) AT SOLENOID POST AFTER TEST COMPLETED.

PROPRIETARY AND CONFIDENTIAL
THE INFORMATION CONTAINED IN THIS DRAWING IS THE SOLE PROPERTY OF KTI Hydraulics Inc. ANY REPRODUCTION IN PART OR AS A WHOLE WITHOUT THE WRITTEN PERMISSION OF KTI Hydraulics Inc. IS PROHIBITED.

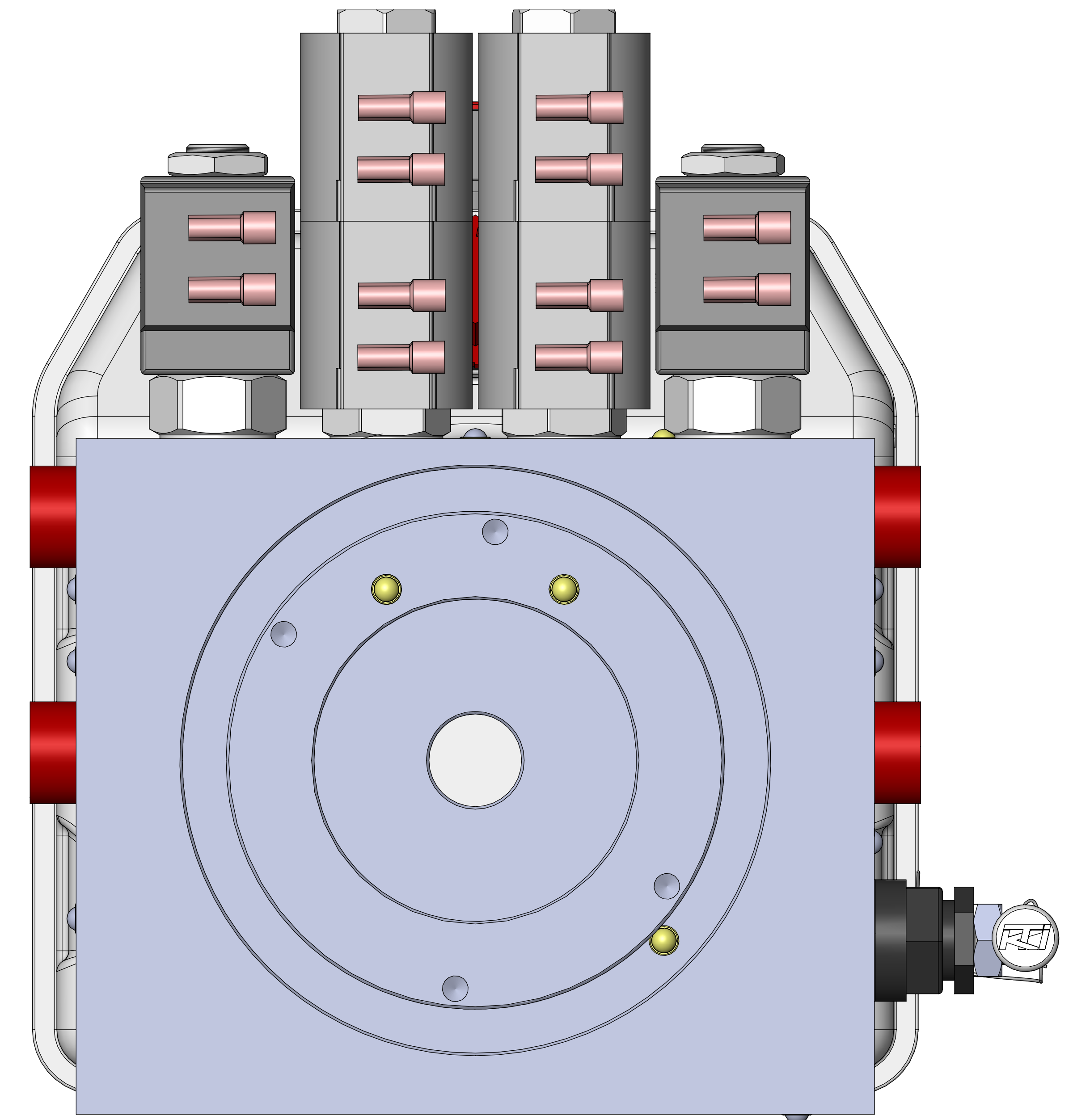
UNLESS OTHERWISE SPECIFIED: DIMENSIONS ARE IN INCHES TOLERANCES ARE: FRACTIONS DECIMALS ANGLES XXX ± .005 ± 1° XX ± .01	DRAWN K. LAI 04/16/12	NAME K. LAI	DATE 04/16/12	
INTERPRET GEOMETRIC TOLERANCING PER: MATERIAL	CHECKED	ENG APPR.	MFG APPR.	
NEXT ASSY	USED ON	FINISH	PREMIUM SUPPLY LTD	



- 1--GREEN(OUT)
- 2--BLUE(IN)
- 3--ORANGE(DOWN)
- 4--RED(UP)
- 5--WHITE(START SOLENOID)
- 6--BLACK(POWER)

WIRE THE WHITE AND BLK WIRE TO THE START SOLENOID REGARDLESS OF WHICH SIDE IS USED TO FUNCTION UP/DOWN OR IN/OUT.

* WIRE RED AND GRN PER ABOVE WIRING DIAGRAM.



VIEW FROM MOTOR SIDE

PROPRIETARY AND CONFIDENTIAL
THE INFORMATION CONTAINED IN THIS DRAWING IS THE SOLE PROPERTY OF [INSERT COMPANY NAME HERE]. ANY REPRODUCTION IN PART OR AS A WHOLE WITHOUT THE WRITTEN PERMISSION OF [INSERT COMPANY NAME HERE] IS PROHIBITED.

UNLESS OTHERWISE SPECIFIED:		NAME	DATE
DIMENSIONS ARE IN INCHES		K. LAI	04/16/12
TOLERANCES ARE:			
FRACTIONS	DECIMALS	ANGLES	
XXX ± .005		± 1°	
		XX ± .01	
INTERPRET GEOMETRIC TOLERANCING PER:			
MATERIAL			
FINISH		SEE NOTES	
APPLICATION	USED ON		
		WIRE SCHEMATIC FOR P.P.P.P.	
		TITLE: KTI 12V DC POWER UNIT WIRING (POWER UP, POWER DOWN, POWER IN, POWER OUT)	
SIZE	DWG. NO.	REV	
E	E-4444		
SCALE: 2:3	WEIGHT:	SHEET 2 OF 2	



HYDRAULICS INCORPORATED